



# Lens Mount Adapter TLH CCS

## Using board lenses with C/CS-mount cameras

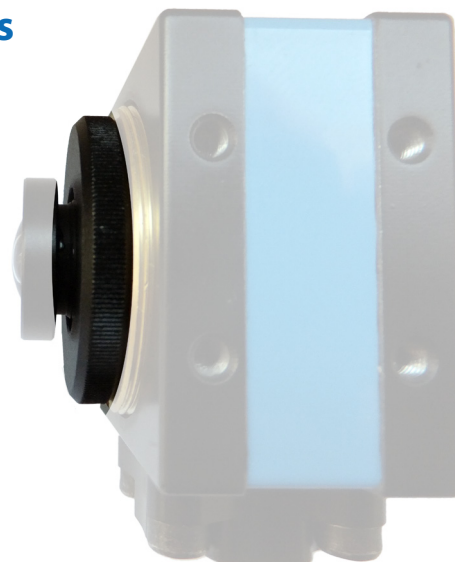
Recently, the cost of industrial cameras has been constantly falling. The cost of C-mount lenses, on the other hand, has remained the same.

The new CMOS cameras, manufactured by The Imaging Source make this development very clear: The prices of entry level models are similar to those of Megapixel C-mount lenses.

The cost of board lenses is incredibly low, while their quality is surprisingly high. They do, however, have two disadvantages:

- Their thread (M12 x 0.5mm) does not fit onto a C/CS-mount.
- They ship without a focus ring.

Both of these issues are solved by the new The Imaging Source adapter TLH CCS.



## Compatibility

The TLH CCS is compatible to most board lenses with an M12 x 0.5 mount. However, please note that this mount is not fully standardized. Therefore, there may be board lenses that do not fit the TLH CCS.

The following The Imaging Source board lenses work well with the TLH CCS:

- |                         |                               |
|-------------------------|-------------------------------|
| • TBL 2.1               | • TBL 8 and TBL 8 C           |
| • TBL 2.9 and TBL 2.9 C | • TBL 9.6-2 C 3MP             |
| • TBL 3.6 and TBL 3.6 C | • TBL 12 and TBL 12 C         |
| • TBL 4.3 and TBL 4.3 C | • TBL 12-2 5MP and 12-2 C 5MP |
| • TBL 6 and TBL 6 C     | • TBL 16 and TBL 16 C         |

## Specification

- Drastically lower the total cost of camera and lens
- Usable for C- and CS-mount cameras
- M12 x 0.5 mount for board lenses
- Fixing screw for board lenses
- Product code: TLH CCS



**Headquarters:** The Imaging Source Europe GmbH  
Sommerstrasse 36, D-28215 Bremen, Germany  
Phone: +49 421 33591-0

**North & South America:** The Imaging Source, LLC  
6926 Shannon Willow Rd, S 400, Charlotte, NC 28226, USA  
Phone: +1 704-370-0110

**Asia Pacific:** The Imaging Source Asia Co. Ltd.  
6F-1, No.230, Sec.3, Ba-De Road,,Song-Shan District 10555,  
Taipei City, Taiwan  
Phone: +886 2-2577-1228  
[www.theimagingsource.com](http://www.theimagingsource.com)

All product and company names in this document may be trademarks and tradenames of their respective owners and are hereby acknowledged.

The Imaging Source Europe GmbH cannot and does not take any responsibility or liability for any information contained in this document. The source code presented in this document is exclusively used for didactic purposes. The Imaging Source does not assume any kind of warranty expressed or implied, resulting from the use of the content of this document or the source code.

The Imaging Source Company reserves the right to make changes in specifications, function or design at any time and without prior notice.

Last update: March 2012

Copyright © 2012 The Imaging Source Europe GmbH; fstlhccs.en\_US.pdf

All rights reserved. Reprint, also in parts, only allowed with permission of The Imaging Source Europe GmbH.

All weights and dimensions are approximate. Unless otherwise specified the lenses shown in the context of cameras are not shipped with these cameras.